

Table 1. Summary of high peaks.

field-ID	R.A. [deg]	Dec. [deg]	ν (Peak- S/N)		
			PEX0	PEX1	GAUSS
SXDS-1	34.0185	-5.0755	4.1	3.8	3.6
COSMOS-1	150.5067	2.7657	5.2	5.2	5.1
COSMOS-2	150.2063	1.8283	4.3	4.4	4.4
COSMOS-3	150.1838	1.6583	4.0	3.9	3.7
COSMOS-4	150.0987	2.7158	4.0	3.7	2.9
COSMOS-5	149.8486	2.2883	5.1	4.9	4.3
ELAIS-1	243.3380	55.4445	4.0	4.0	3.8
ELAIS-2	242.8025	55.5614	6.5	6.5	6.6
ELAIS-3	242.6855	55.4296	4.2	4.2	3.6
ELAIS-4	241.2850	55.6263	4.2	4.2	4.2
ELAIS-5	241.2278	54.5485	4.2	3.9	3.4
ELAIS-6	241.2034	54.4808	4.1	3.9	3.4
ELAIS-7	241.1764	54.5356	5.3	5.2	5.2
ELAIS-8	240.8272	55.1126	4.3	4.3	4.3

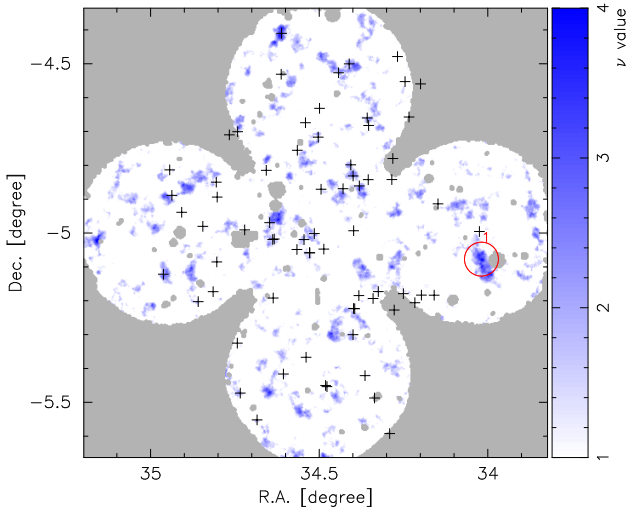


Figure 1. \mathcal{K} maps for the SXDS field, generated with the PEX0 filter are plotted by blue scale. Gray regions are either the region outside the analyzed area (within 15 arcmin from the field centre of Suprime-Cam) or masked regions where the data are affected by bright stars. High peaks with $\nu > 4$ are marked with red circle along with ID given in Table 1. The Plus symbols show positions of known clusters taken from a compilation by NASA/IPAC Extragalactic Database (NED).

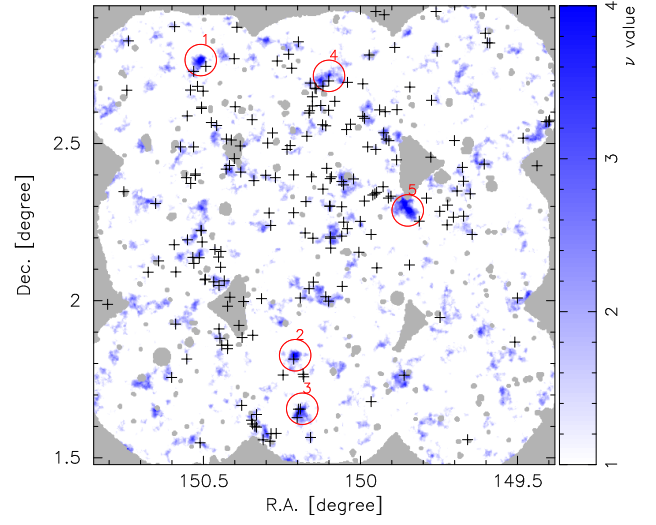


Figure 2. Same as Fig. 1 but for the COSMOS field.

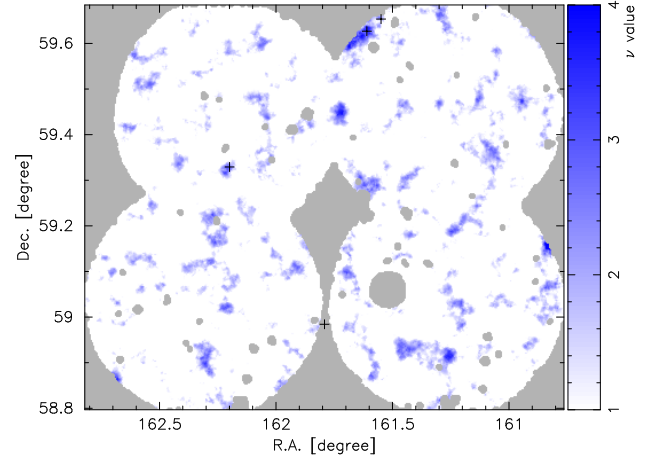


Figure 3. Same as Fig. 1 but for the Lockman-hole field.

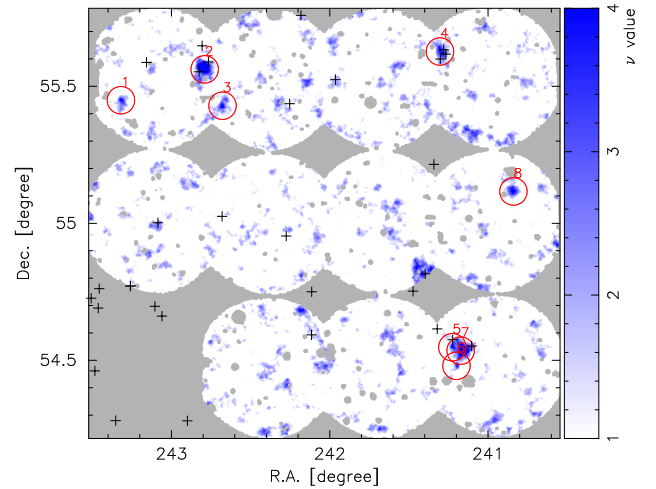


Figure 4. Same as Fig. 1 but for the ELAIS N1 field.

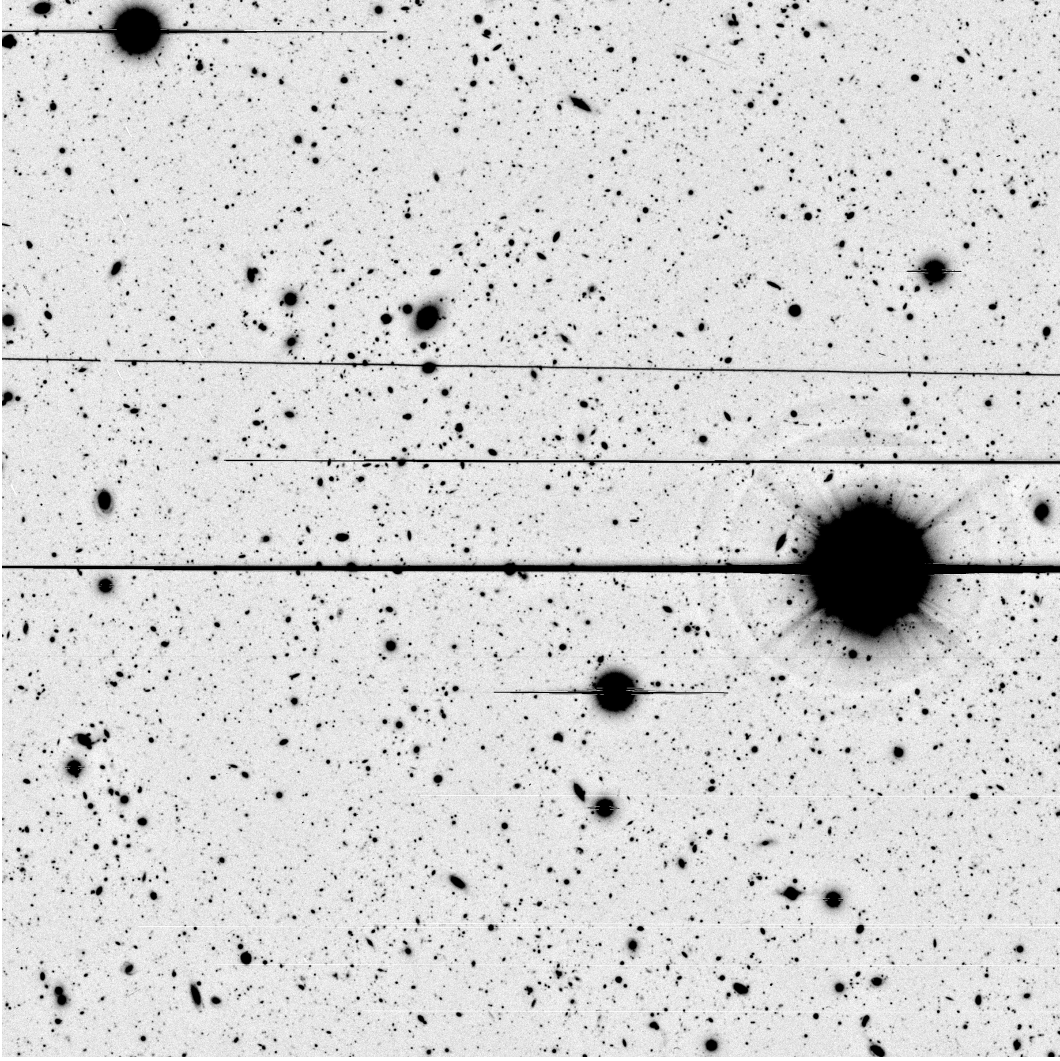


Figure 5. i' -band image, 8×8 arcmin² centered at the weak lensing peak position of SXDS-1.

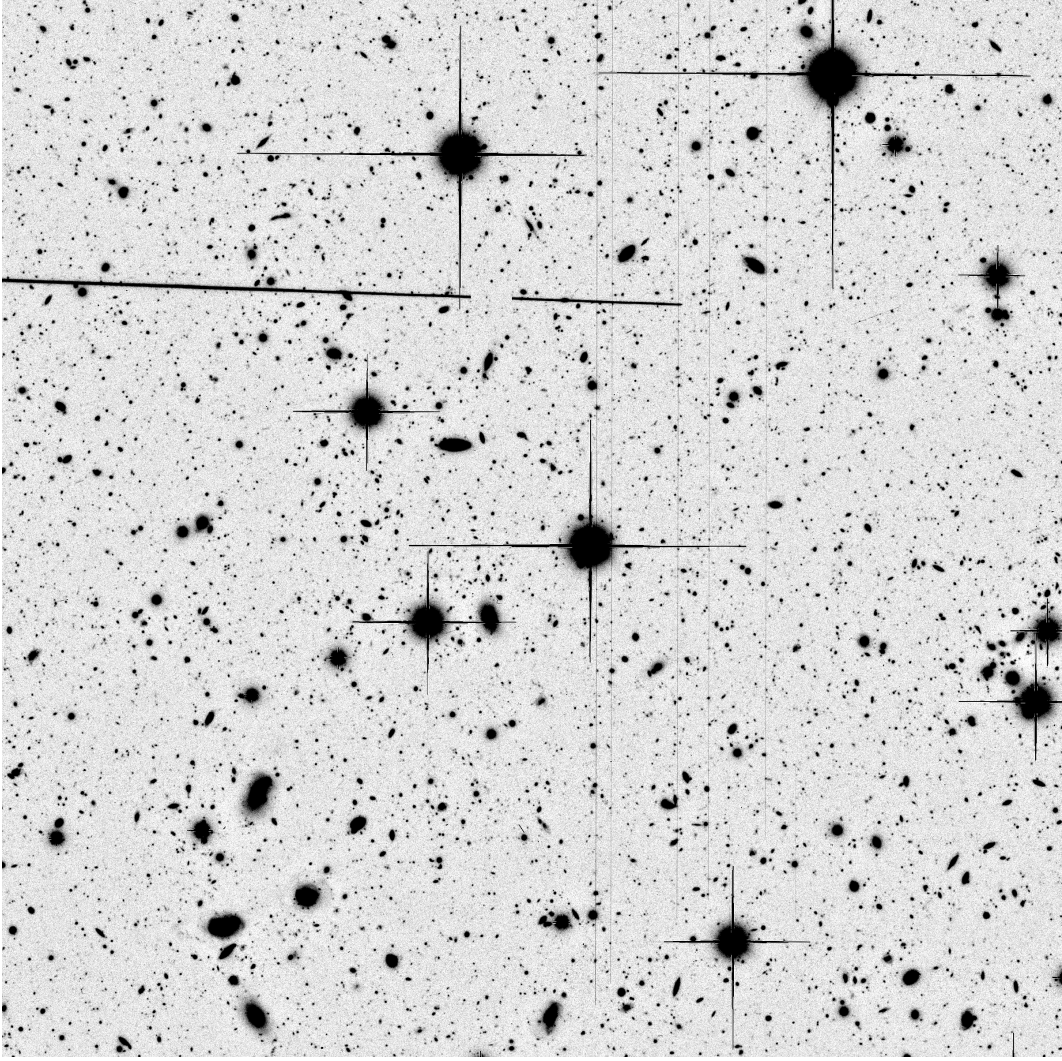


Figure 6. Same as Fig. 5 but for COSMOS-1.

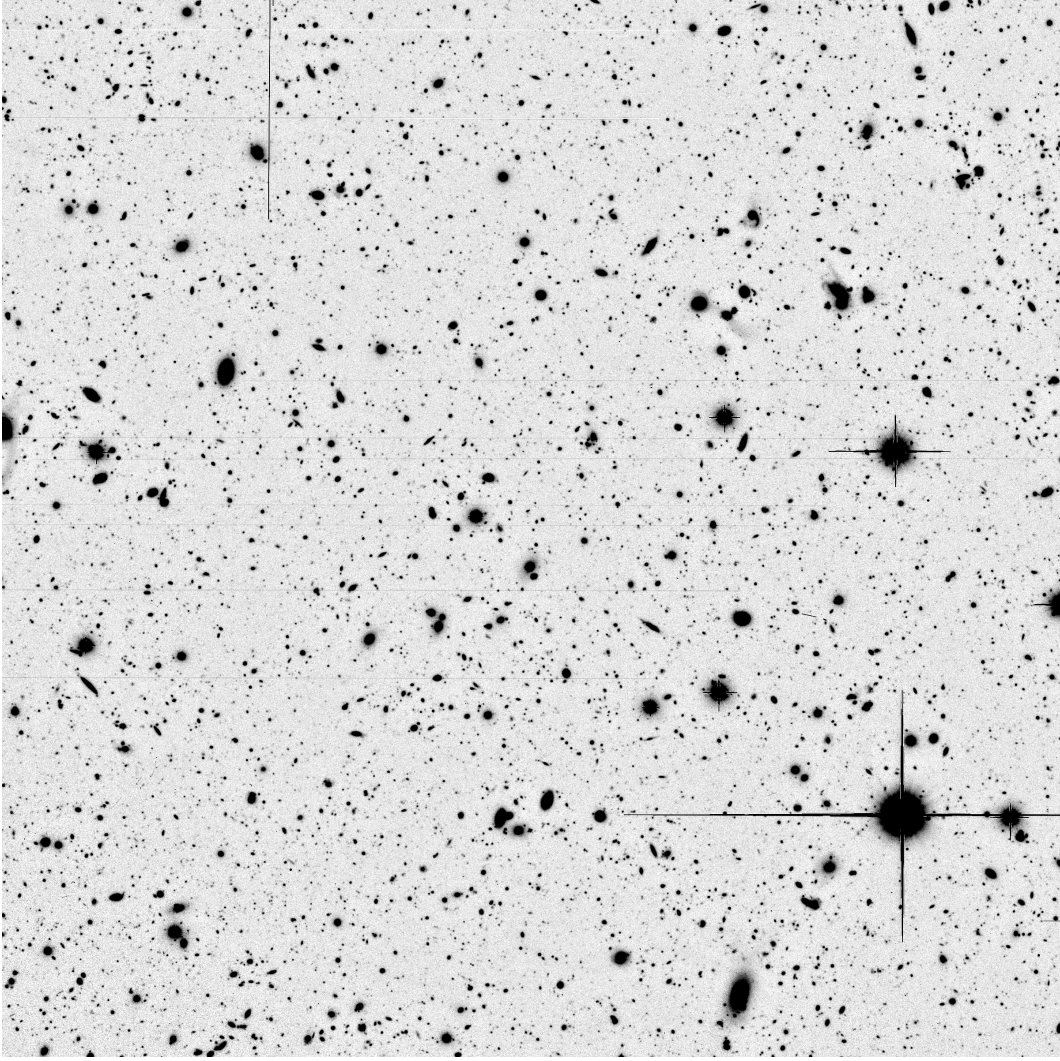


Figure 7. Same as Fig. 5 but for COSMOS-2.

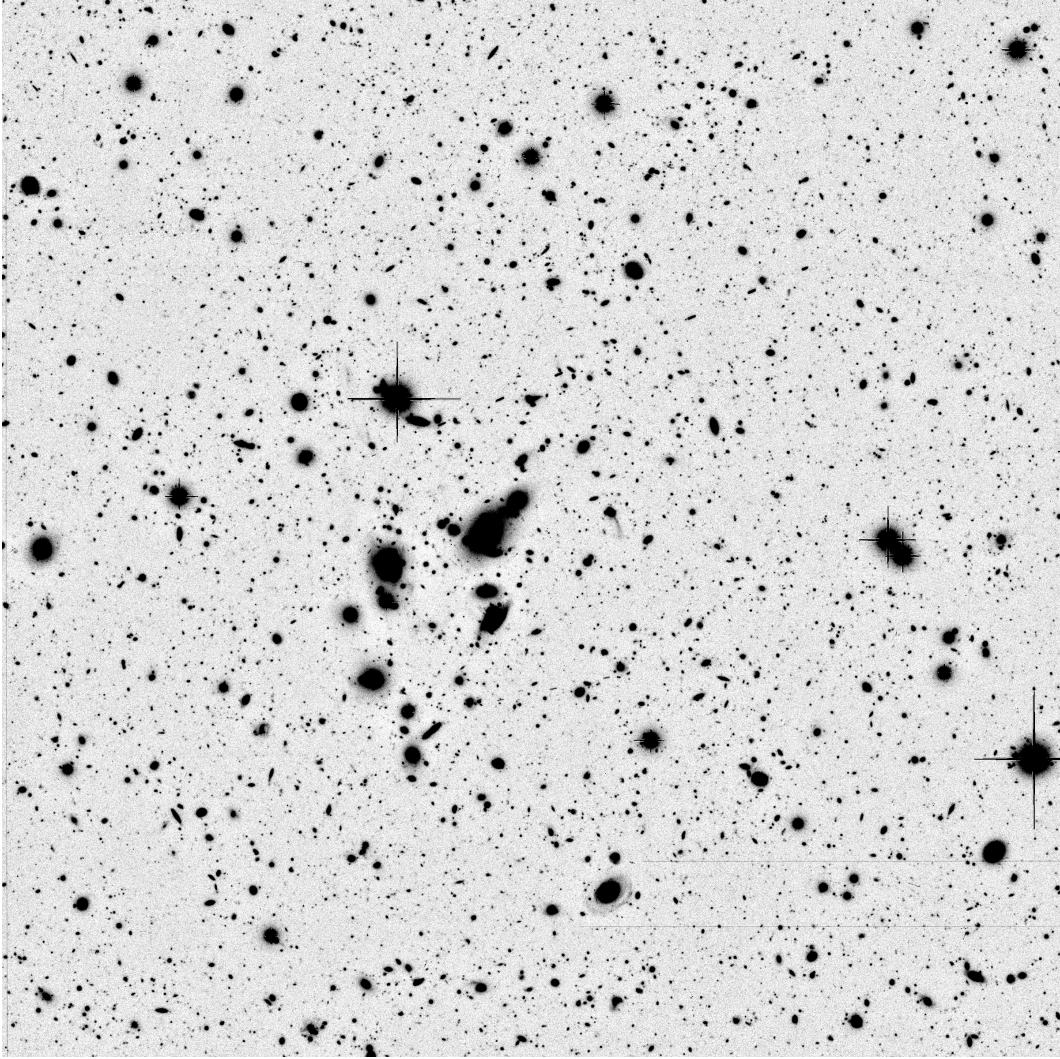


Figure 8. Same as Fig. 5 but for COSMOS-3.

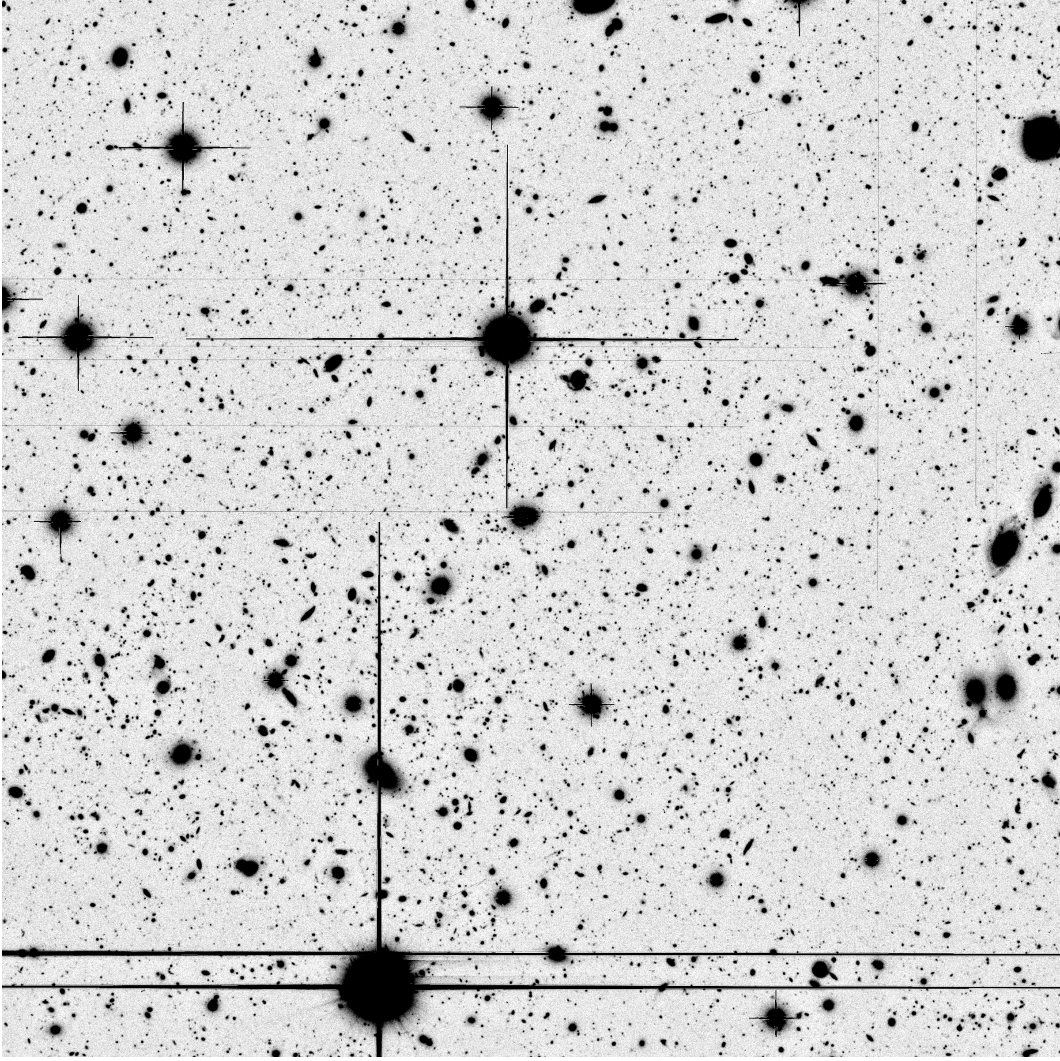


Figure 9. Same as Fig. 5 but for COSMOS-4.

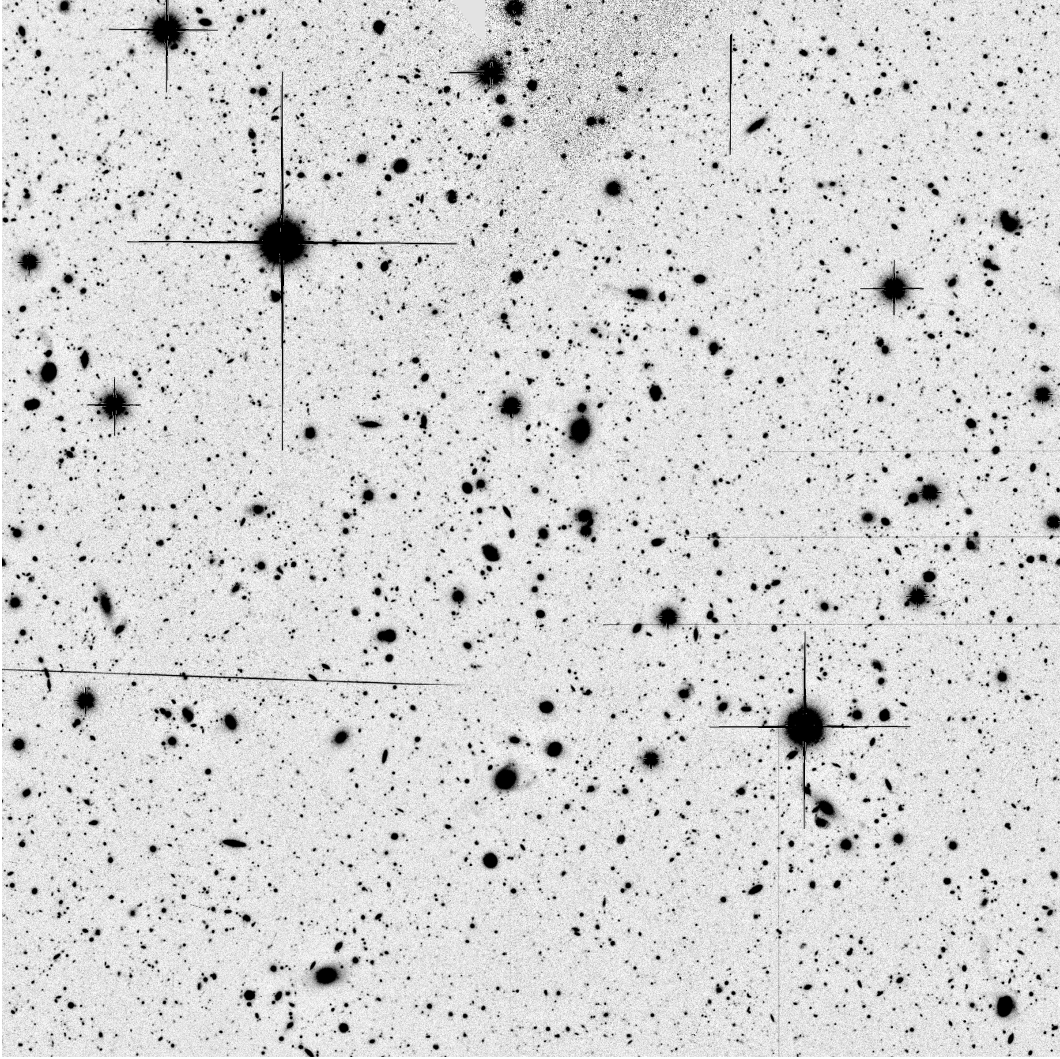


Figure 10. Same as Fig. 5 but for COSMOS-5.

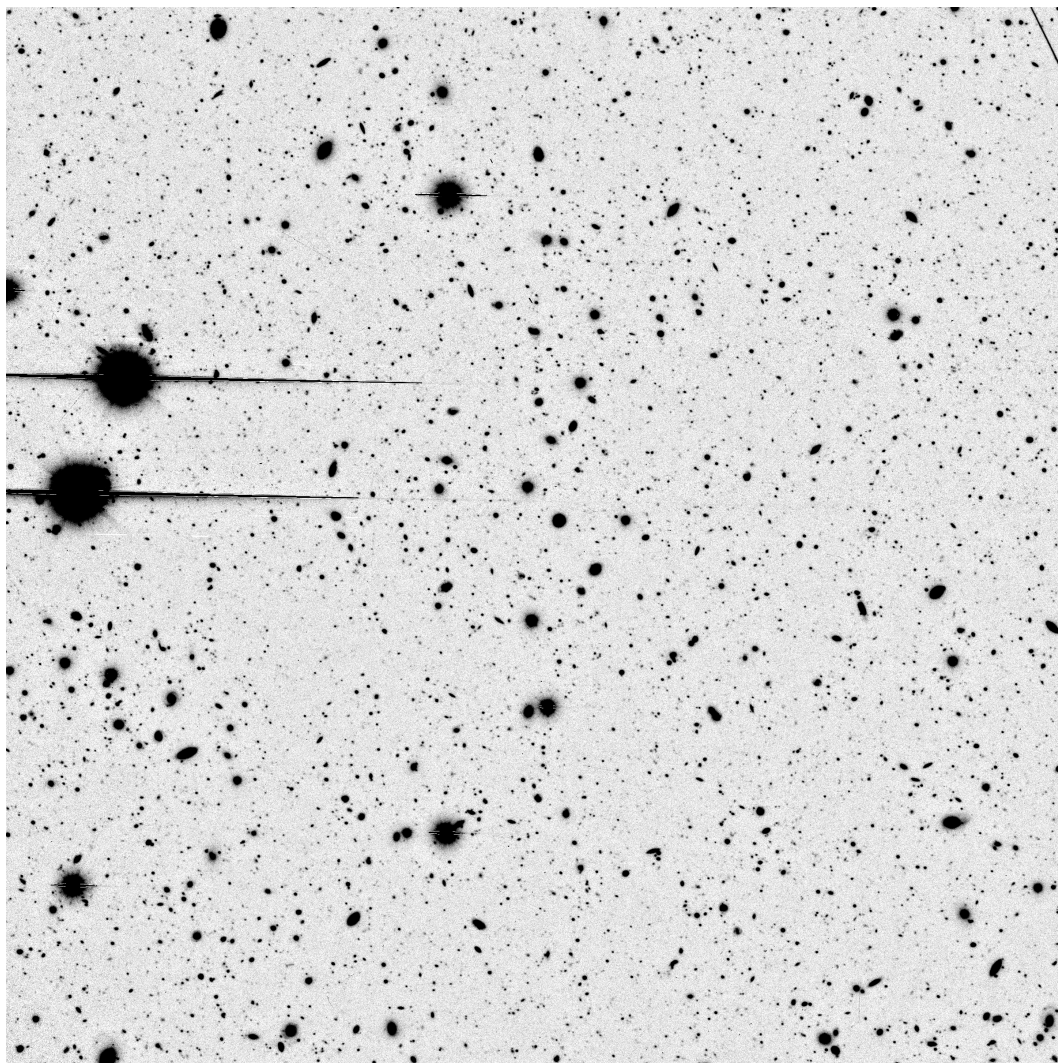


Figure 11. Same as Fig. 5 but for ELAIS-1.

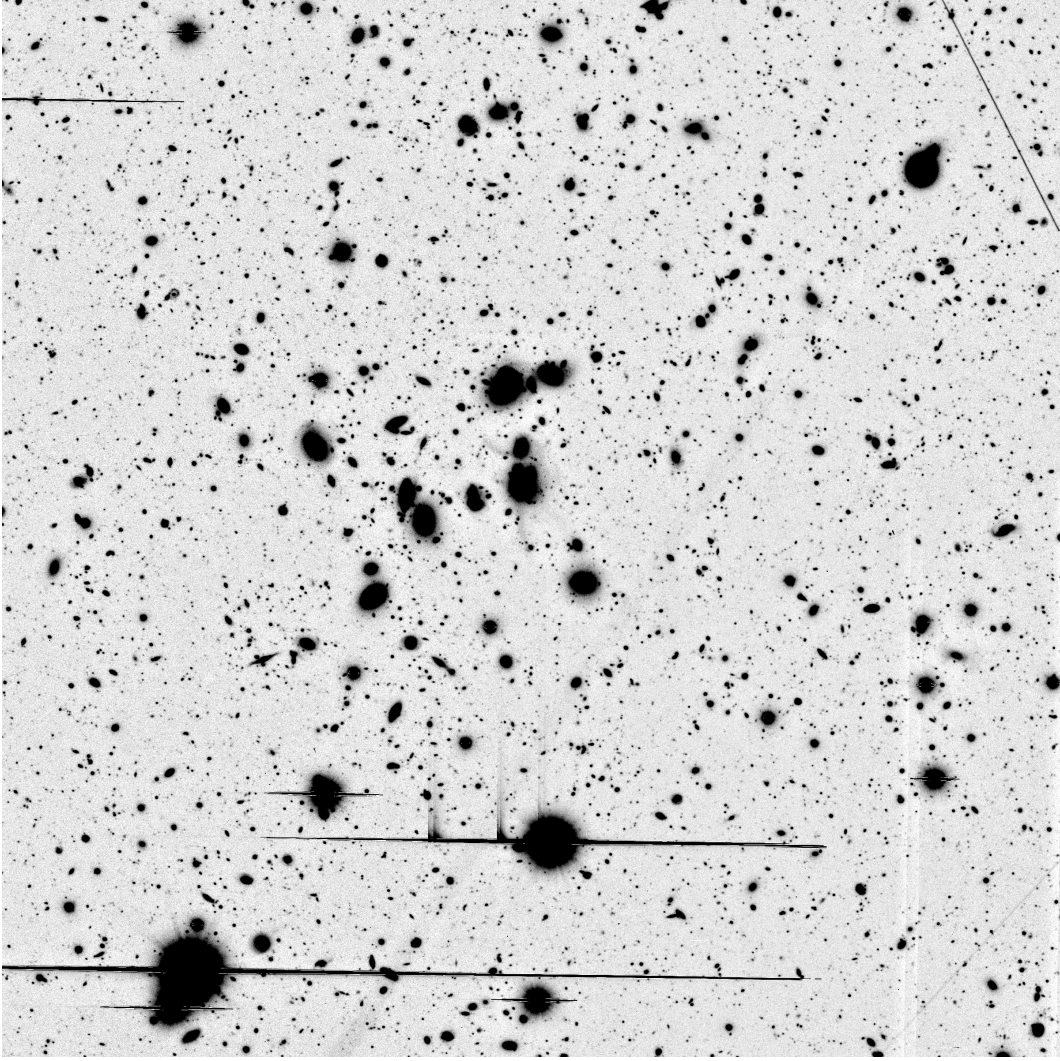


Figure 12. Same as Fig. 5 but for ELAIS-2.

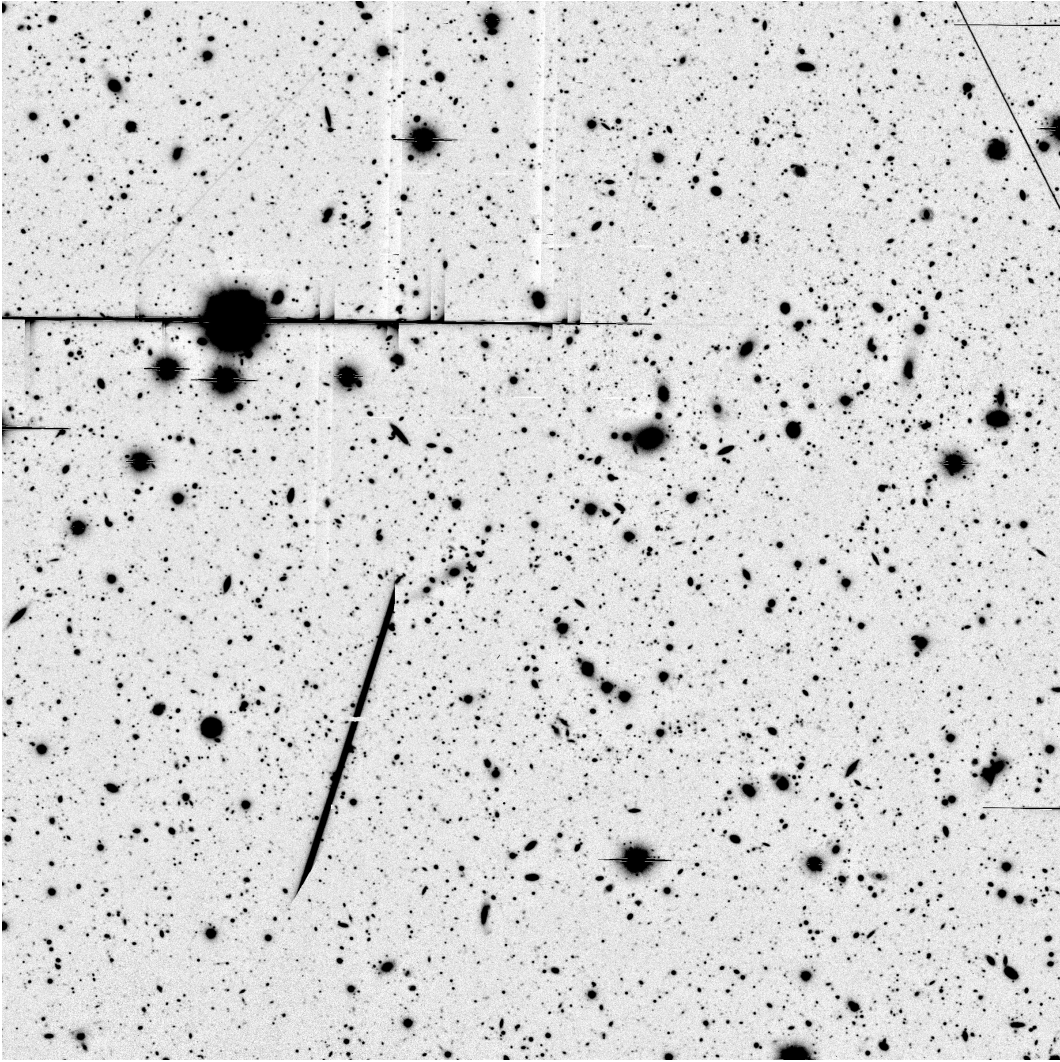


Figure 13. Same as Fig. 5 but for ELAIS-3.

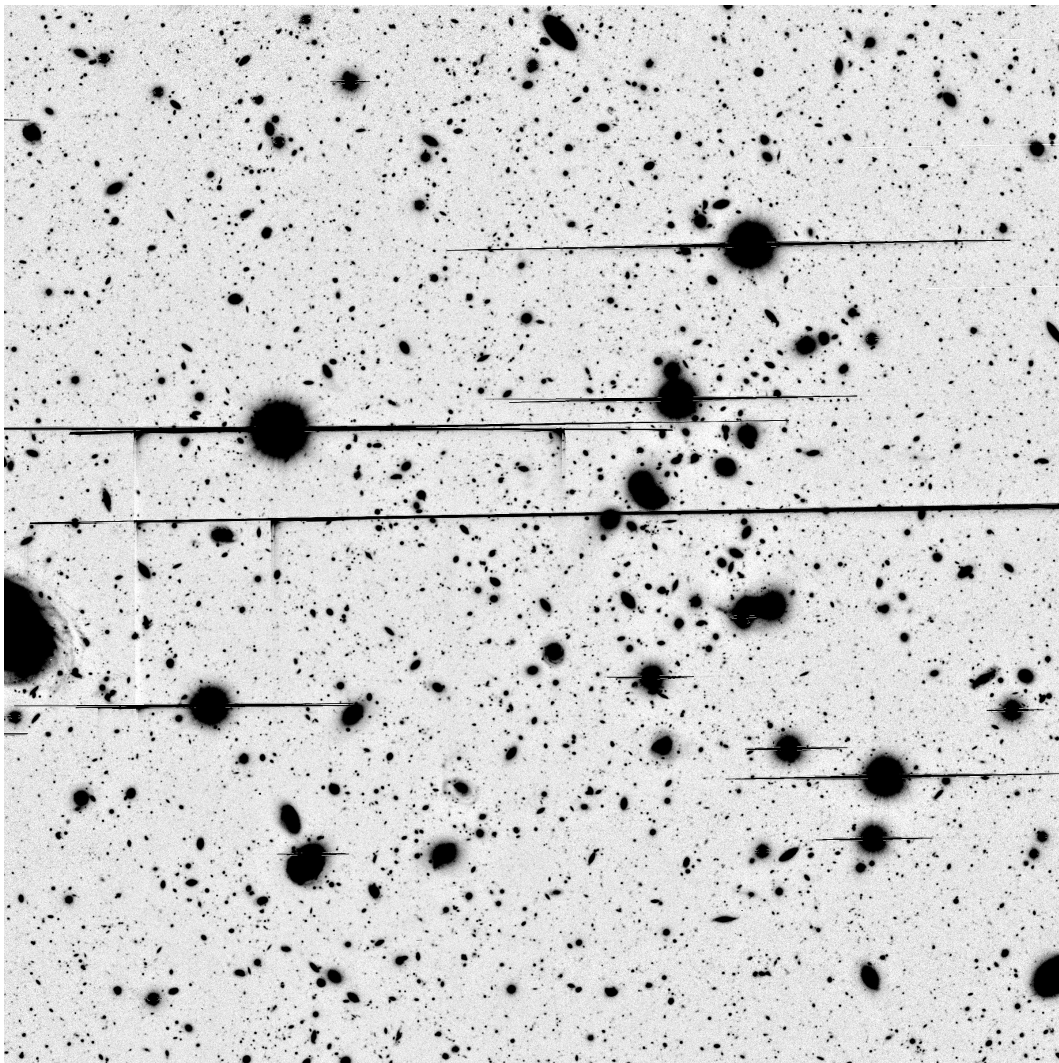


Figure 14. Same as Fig. 5 but for ELAIS-4.

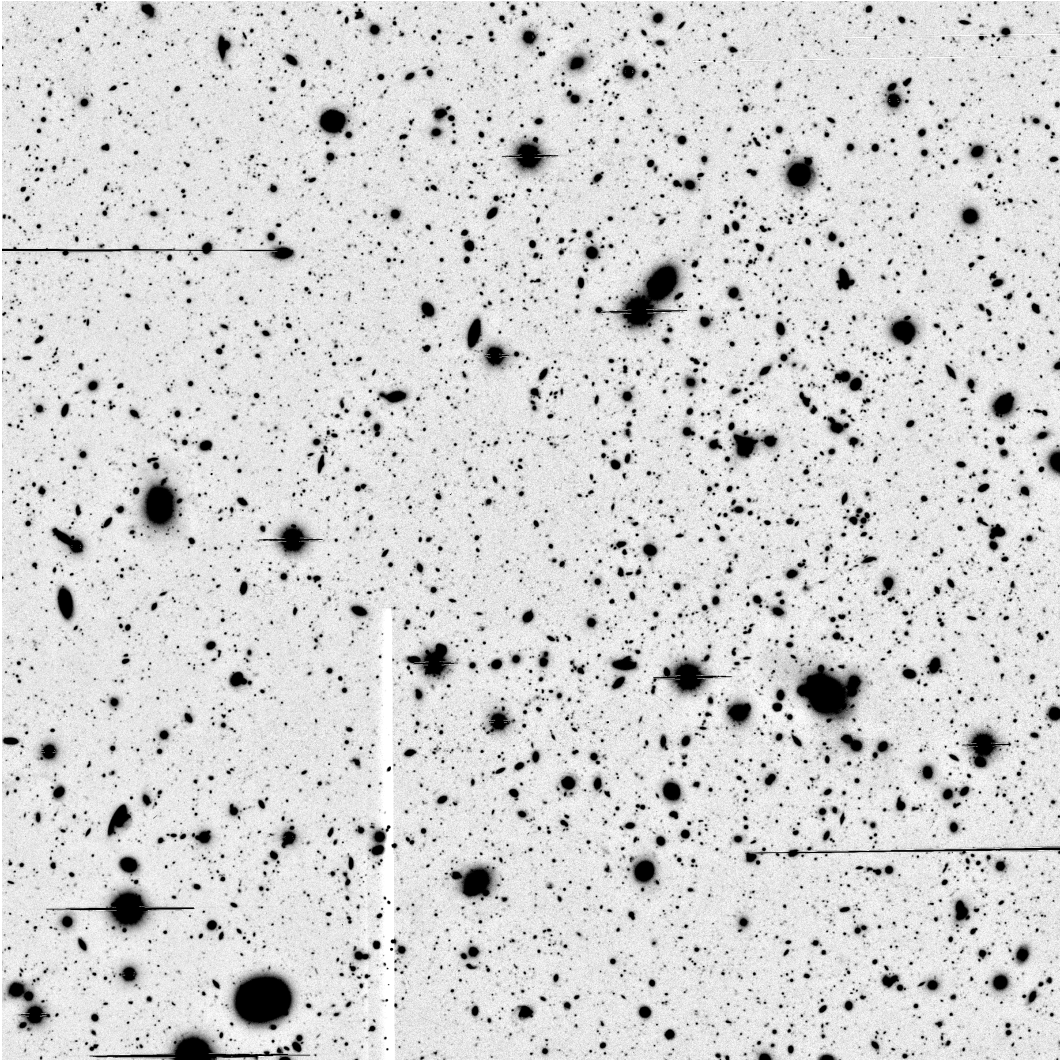


Figure 15. Same as Fig. 5 but for ELAIS-5.

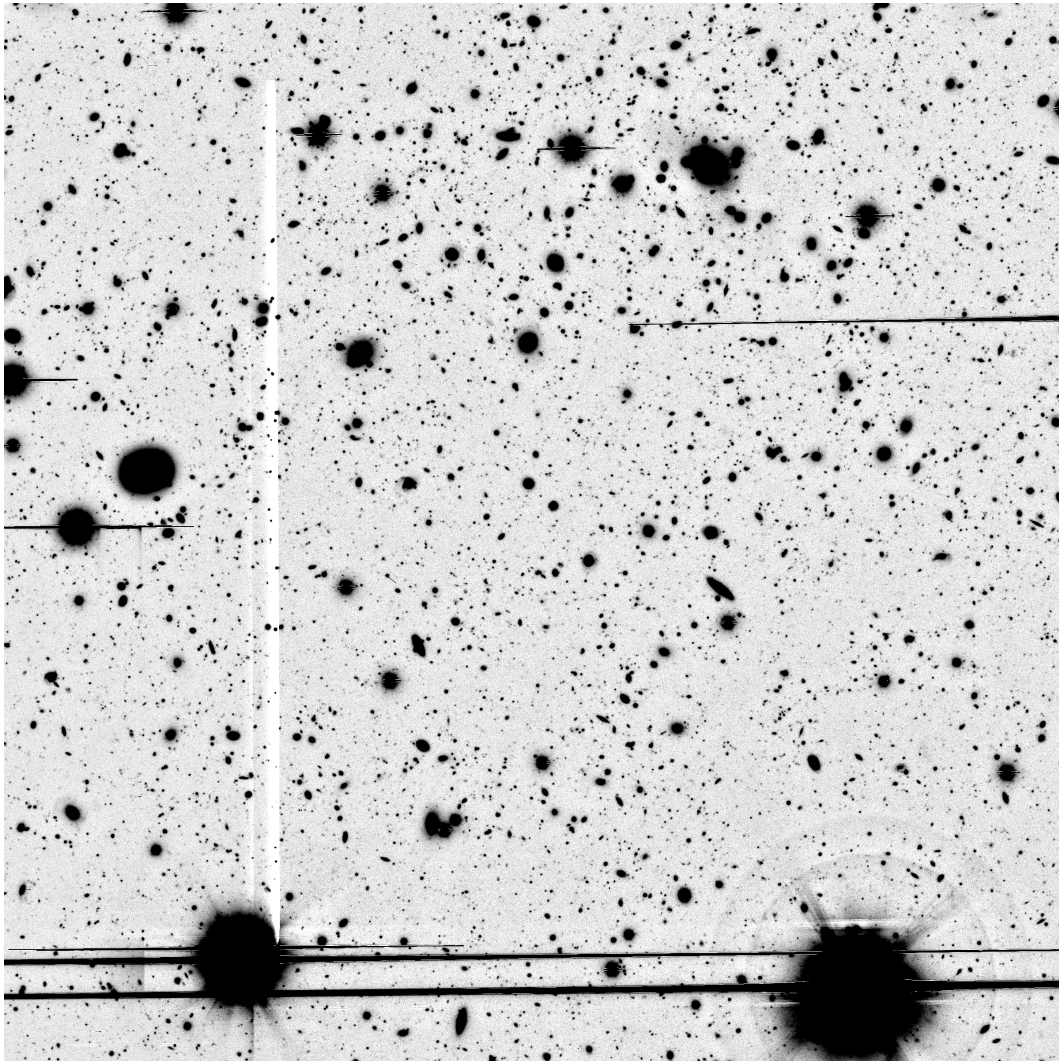


Figure 16. Same as Fig. 5 but for ELAIS-6.

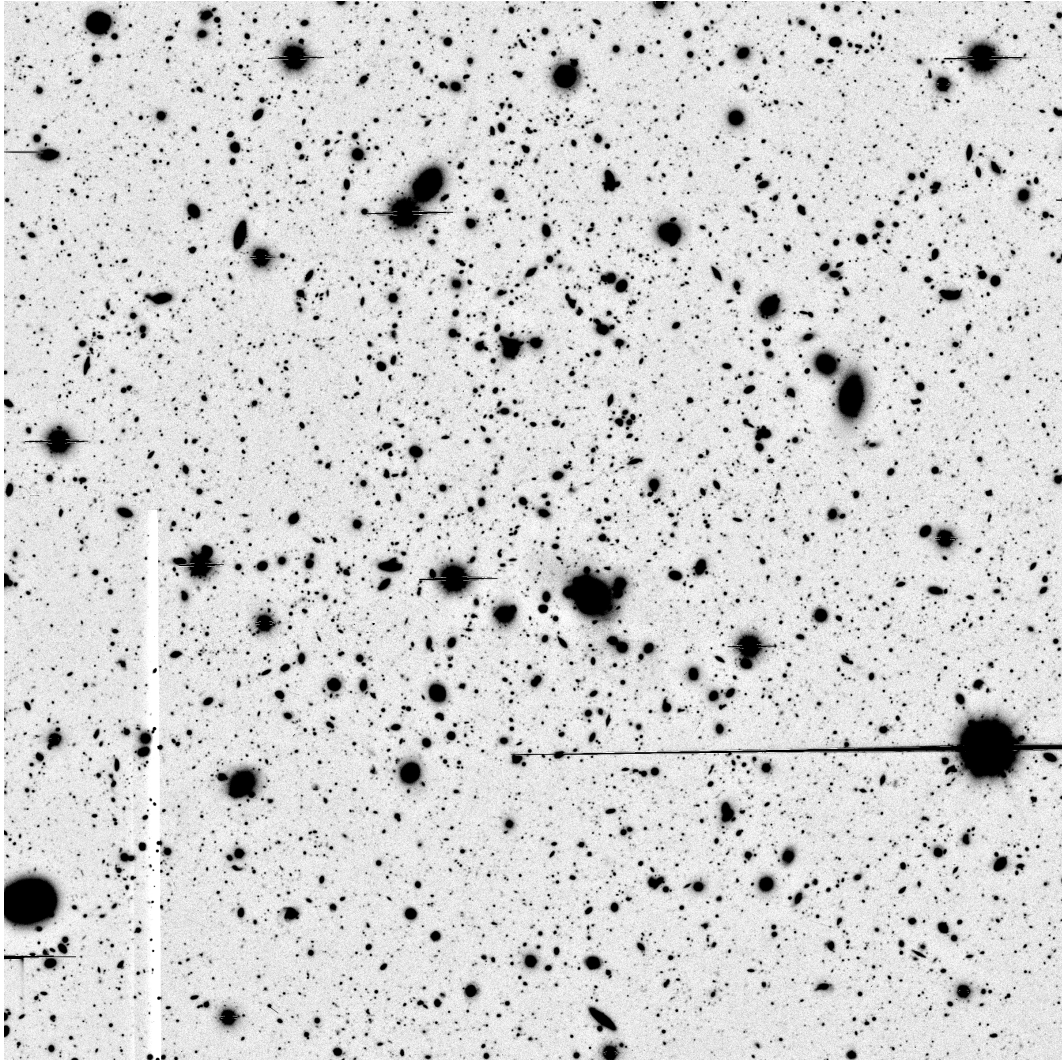


Figure 17. Same as Fig. 5 but for ELAIS-7.

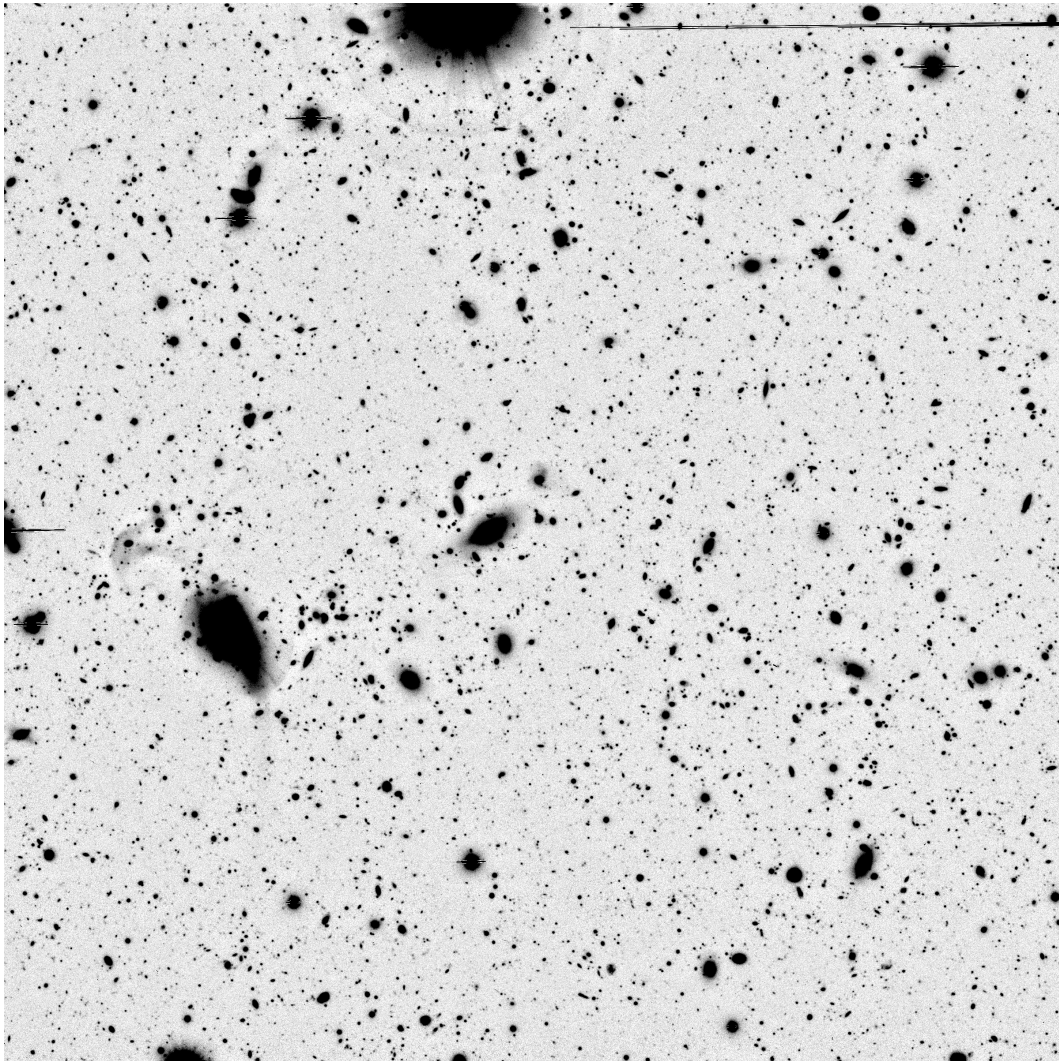


Figure 18. Same as Fig. 5 but for ELAIS-8.